

Number 20

September 2019

A bi-monthly electronic official newsletter of the PRRT&HS published for the purpose of disseminating information on current issues and events pertaining to the Society's and Chapter's operations and administration as well as other information of interest about the PRR.

Editor – Pauletta Ader

Please send comments and corrections to the Editor at: pauletta.ader@yahoo.com

Copyright PRRT&HS – 2016 – All Rights Reserved. May be reproduced for distribution. The email distribution of the E-news is now functional To unsubscribe click on line below and send.

keystone-e-news-request@lists.keystone-pubs.org?Subject=unsubscribe To subscribe click on line below and send.
[keystone-e-news-request@lists.keystone-pubs.org? Subject=subscribe](mailto:keystone-e-news-request@lists.keystone-pubs.org?Subject=subscribe)

Not for sale.

If you have a submission for the November E-news PLEASE forward it to me by October 15th. Thank you. Pauletta Ader Editor of the E-news. pauletta.ader@yahoo.com

IN THIS ISSUE

- MEMBERSHIP
- STATION AND ARCHIVES
- LEWISTOWN HAPPENINGS
- ANNUAL MEETING HIGHLIGHTS
- NOTES FROM THE BOARD OF DIRECTORS
- FUTURE ANNUAL MEETING LOCATIONS

- **FEATURE CHAPTER**
- **RAILFAN CORNER**
- **PRRT&HS ADVERTISING AND PUBLIC RELATIONS**

MEMBERSHIP

FINAL 2016 MEMBERSHIP TOTALS AS OF 5-22-19

As of May 22, 2019, the PRRT&HS membership for 2018 is as follows:

Regular	2158
Sustaining	308
Contributing	80
International	35
Keystone	146
Total	2727

Non-renewals 215 Renewal Rate $2,507/2,722=92.1\%$
 Keystone mailings include 10 gratis copies (museums, libraries, etc.)

The number of new members for 2018 is 220.

2018 MEMBERSHIP TOTALS AS OF 8-18-18

As of Aug. 9, 2018, the PRRT&HS membership for 2018 is as follows:

Regular	2040
Sustaining	305
Contributing	80
International	30
Keystone	142
Total	2597

Non-renewals 311 Renewal Rate $2,411/2,722=88.6\%$
 Keystone mailings include 12 gratis copies (museums, libraries, etc.)

The number of new members for 2018 is 186.

2019 MEMBERSHIP TOTALS AS OF 8-20-19

As of August 20, 2019, the PRRT&HS membership for 2019 is as follows:

Regular	1969
Sustaining	306

Contributing	87
International	26
Keystone	135
 Total	 2525

Non-renewals 364 Renewal Rate $2,361/2,727=86.6\%$
 Keystone mailings include 10 gratis copies (museums, libraries, etc.)

The number of new members for 2019 is 164.
 Submitted by Andy Hart

STATION AND ARCHIVE

Station:

The Lewistown volunteer staff is pictured with their “official” PRRT&HS shirts. These devoted volunteers which include 2 husband and wife teams and a grandfather and grandson team, greet and assist Amtrak passengers on a daily basis. These volunteers are not only devoted to Amtrak passengers, but also provide a safe and friendly environment at our station. The PRRT&HS and Lewistown community are eternally grateful for their services to both Amtrak and this community.

Article submitted by Richard Ader



Volunteers



Tom Morningstar and Cameron



George and Mary Mohler

Photos submitted by Pauletta Ader



Harry and Linda Baumgardner

All PRRT&HS MEMBERS ARE WELCOME TO COME VOLUNTEER THEIR SERVICES IF PRESENT DURING AN ARCHIVE SESSION. CONTACT CHARLIE HORAN charliehoran@verizon.net

LEWISTOWN HAPPENINGS

Rail Camp East 2019 Report

By: Jackson Palm

Day 1 (Monday 7/1): We started off the day at the Amtrak shops in Wilmington DE. First we got a safety briefing from the AVP of Operations for Amtrak and I finally found out what PTC does. After the safety briefing, we then we got a tour of the shops. After wrapping up the shop tour, we then made our way to the CNOC-CETC Center (the operations & training center), also in Wilmington. We first toured CETC which dispatches train movements on the Keystone Corridor and the NEC between Philadelphia and Washington D.C... After that, we toured CNOC, which manages the entire Amtrak equipment roster and plans what equipment will go where. We then made our way to the Wilmington train station, where we got aboard a southbound Amtrak Northeast Regional to Washington D.C... We got our own private cars to ride in: the Catenary Inspection car, the Track Geometry car, and the Theatre car. We arrived in Washington D.C. to get straight to our activities. We started off with an Amtrak Police dog training session, we then went to "K" tower, which controls the throat tracks into Washington Union Station. After that, we got a tour of Union Station and we then toured the former REA building which is now an office building for Amtrak. We wrapped up the day with a ride on the northbound Acela Express back to Wilmington.

Day 2 (Tuesday 7/2): We started off the day at the Amtrak Training Center, again in Wilmington. We first had a three hour presentation from a former Rail Camper now turned Amtrak Public Relations employee. He basically explained that there are lots of job options in the railroad industry besides engineer and conductor. He also said that there are big changes coming to Amtrak in the next 5 years. After that we did simulated train dispatching on computers. We also toured the cab of one of Amtrak's Dash 8s. Lastly, we got to try out the Acela Express power car, ACS-64, and P42DC locomotive simulators they have at the Training Center. Later that evening we got another 3 hour presentation from an engineer that works for the Reading, Blue Mountain, and Northern Railway.

Day 3 (Wednesday 7/3): Day 3 was spent at the Railroad Museum of PA in Strasburg, PA. We first did a scavenger hunt where we just walked around the museum and found facts about the equipment. We then gathered information for a presentation we would do on Friday on a certain piece of equipment. We got another museum tour but this time we got to go inside PRR 7002, PRR 5901, PRR 4935 and the Locust Club car. Lastly, we got a tour of the restoration shop where they cosmetically restore the museum's equipment. That evening we rail fanned at the Newark, DE train station, where we saw many Amtrak trains, two SEPTA trains and a Norfolk Southern empty oil train: 67X.

Day 4 (Thursday 7/4): We spent Day 4 at the Strasburg Railroad in Strasburg, PA. Our first activity was to program a machine that engraved a railroad spike to say: RAILCAMP 2019. We got to keep the spike. We then got to operate the LO&S Doodlebug, a gas-electric railcar, and it was as simple as driving a car. In the afternoon we got to operate the Cagney 15 inch gauge steam engine through the SRC's grounds. We got rained out for our fourth activity, so we got a shop tour instead.

Day 5 (Friday 7/5): Our final day was spent at the Railroad Museum of PA in the morning and the Strasburg Railroad in the afternoon. We did our presentation on the Conrail wrecker crane at the RR Museum of PA and got to walk the museum grounds again. At the Strasburg Railroad we rode their excursion train to Paradise, PA and back. We met the eastbound Amtrak Pennsylvanian while at Paradise. After that, we did our fourth activity, which was yard operations. We finished up the day with a cab ride in Strasburg Railroad 89.

Summary: I found the Rail Camp experience to be truly incredible. It completely blew my expectations away. I met so many great people and learned so much from this camp. I would like to thank everyone with the PRRT&HS for sponsoring me and providing me with this great experience that really enriched my life.

State Flag

On August 12, 2019, Lewistown Mayor Deb Bargo once again showed her love and support for the PRRT&HS and the Lewistown station grounds, by donating a new state flag to the society to fly on the station grounds. Receiving the flag from Mayor Bargo is station manager and society Vice President, Rich Ader and maintenance man Gary Hoy. Thank you again Mayor Bargo.



Article and Photo submitted by Pauletta Ader

Broadway Ltd in Lewistown

The Broadway Limited still lives! July 12-14 2019 the Conrail Historical Society sponsored the 70th anniversary run of the luxurious train, with 3 original Broadway cars, The Catalpa Falls, Colonial Crafts and Frank Thompson, all attached to the rear of Amtrak train #42 the Pennsylvanian EnRoute to Pittsburgh from New York Penn Station. The passengers were served

authentic PRR meals served on the Broadway prepared on board from menus provided by the PRRT&HS Archives. Many spectators lined the rails to catch a glimpse of the past.

Article submitted by Rich Ader

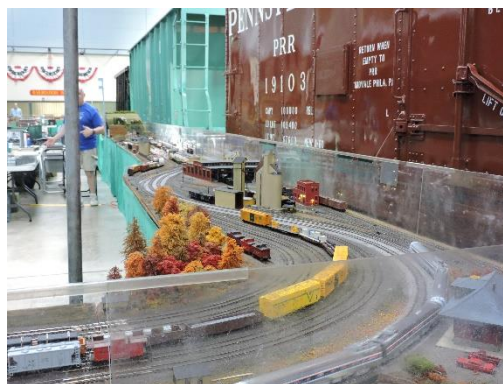


Photos submitted by Gary Hoy

NOTES FROM THE BOARD

Our Society was represented at the annual Railroad Heritage Days at the Railroad Museum of Pa. Modelers John Frantz and Kris Koller displayed their models. The Aders were selling Lewistown apparel and members of the LIRR chapter were present as well. Several book orders and membership forms were taken.

Joe Acri (Coordinator) Director



Photos submitted by Pauletta Ader

Don Wood Photographs Available

Don Wood's negatives have all been digitally scanned and prints or scanned images are available for purchase. Here are the steps to follow.

Access the museum web site by clicking on this link

<https://rrmuseumpaorg/collections/research/>

Scroll to the bottom of the page to access the order form. The form can be emailed or can be sent by regular mail to the museum.

Click on Collections at the top of the page.

Click on Research.

Click on Search Online Archives.

In the search field you can enter any of the following criteria-
Don Wood Pennsylvania Railroad Negatives.
Don Wood Pennsylvania Railroad Steam Locomotive Negatives.
Electric
Diesel
Etc.
The images will appear with a watermark but are clear enough so you see the entire image.
Contact Information- Lauren Radkiewicz (c-lradkiew@pa.gov)
Dodie Robbins (c-dorobin@pa.gov)
Submitted by Joe Acri, Director

The PRR Project internet group (<https://groups.io/g/PRRPro>) is currently working on project #33, the X37 and X38 series boxcars. All levels of experience in modeling are welcome and all scales are welcome. The majority of models being built are F&C HO scale resin kits, but any model in any scale is welcome for discussion. PRRPro is a group effort and thus there is no formal leader. It's more like a Co-op where everyone pitches in with ideas and suggestions. The X37-38 project will run through the end of December. The next project, H25 hoppers, will start January 1, 2020.

Submitted by Bruce Smith, Director

PRRT&HS Needs Some IT Volunteer Help

Dave Evans, PRRT&HS Director

At this year's annual meeting, we started to pull together a volunteer team for working on various internal IT projects. An "IT-Vol" subgroup of the PRR's ADMIN user group at groups.io has been established. Please e-mail Dave Evans at devanspr@gmail.com if you want to volunteer to help. After a false start last year, this year we really need to get rolling, with the first task being to create an on-line membership management system. An incomplete list of requirements includes:

- On-line renewals, including possible automated renewals
- Annual Proxy's (Voting on official society business electronically)
- Annual meeting notice distribution and on-line registration
- Collect member demographics to better aid future recruitment and retention
- Support member discounts in e-store
- Support free document downloads to members (limited set of archive documents, annual meeting presentations, or at least web viewing to members only (or videos or presentations?))
- Possible member profiles on-line for those who wish to participate (T1 Trust supports this)

Submitted by Dave Evans, Director

Changes to PRRT&HS “PRR Valuation Map” Distribution Process Coming

Based on the Val Map meeting at the 2018 Annual Meeting, we have decided to release the val maps in larger batches with little additional information – we can do that quickly. They will be distributed on “Memory sticks”, although in a format more like a credit card to make them a little harder to misplace or get confused with other memory devices.

But we will need to start a “crowd sourced” effort to develop finding aids on-line – the Val maps alone are difficult to decipher. Keep an eye on the PRR groups.io discussion thread -we hope to get this effort rolling by the end of the summer, and possibly distribute the first memory card (either 64GB or 128GB – these files are huge, and there are a lot of them), which may include all 1949 PRR Val maps within the state of Pennsylvania. Subsequent memory cards will then include MD/DE/NJ/NY, then Ohio, and finally IN/IL/MI. This order is in part due to the remaining amount of work required to get the Val maps for those states into a condition suitable for distribution.

If you are interested in joining the crowd source effort to create interpretive and “feature rich” content for the PRR’s Val Maps that we will make available on-line, e-mail Dave Evans at devanspr@gmail.com. We hope to have the group up and running by the end of the summer – most likely on groups.io.

Submitted by Dave Evans, Director

Archive donation from Southern Railway Historical Association

Several years ago CSX donated a large collection of aperture cards made by Conrail’s mechanical department to one of the southeastern US railroad historical societies. The collection included a significant number of mechanical drawings from Conrail’s predecessor railroads, including the PRR. They migrated between different locations for a few years, finally coming to rest at the SRHA’s new Archive facility in Chattanooga, TN. SRHA offered the drawings that originated with the PRR, and over 40,000 aperture cars were picked up and transported to our Lewistown archives the first weekend in June. The Archives is currently assessing how complete the collection of cards is. They are 35mm size microfilm of various PRR drawings up to the end of the PRR, potentially filling a gap in the Archive’s collection. However, we know the collection is not 100% complete, so an assessment will be conducted. The PRRT&HS is very grateful to the SRHA for preserving, storing and then donating these drawings to us. For years there has been an on-going exchange by various railroad historical societies to “repatriate” the archival documents that come into their possession that is not their own. This may have been one of the largest exchanges, and cooperation among the various societies will continue to be an important function of the Archives team.

Submitted by Dave Evans, Director

FUTURE ANNUAL MEETING LOCATIONS:

2020 - May 13-16 -- State College, PA

STAY TUNED FOR UPCOMING EVENTS AT THE PENN STATER!!!!

FEATURE CHAPTER

IF YOU WOULD LIKE TO FEATURE YOUR CHAPTER IN A FUTURE EDITION PLEASE CONTACT pauletta.ader@yahoo.com editor of the E-news

RAILFAN CORNER

E news editor Pauletta Ader and her husband Richard (PRRTHS Vice President and Lewistown station agent) spent 2 weeks in Folkston, GA enjoying the area and sights in and around Folkston. While visiting the CSX ex-ACL station and museum a conversation ensued with a local gentleman known as “Cricket”, who recalls watching the ACL Florida trains EnRoute to Jacksonville and points south coming from points north, and remembers vividly seeing many PRR cars in the consists of the various trains. Today only Amtrak’s long haul Silver Star and Silver Meteor, polish the rails through the Folkston Funnel. Amtrak’s Auto train also goes through the funnel (no PRR connection). A good destination to enjoy train watching and reminiscing; while there, visit the trackside café The Cane Pole Café. It is run by mother and daughter Charlene and Sheila Carter. The food is not only excellent but cooked right in front of you. Awesome spot, awesome food, a must do.

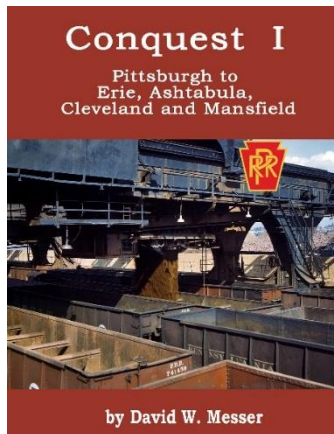
Article submitted by Richard Ader

PRRT&HS PUBLIC RELATIONS

For additional information or to arrange for use of the portable display contact Frank Napoleon at frank.napoleon@verizon.net.

NEW BOOK NOW AVAILABLE

CONQUEST 1 - PITTSBURGH TO ERIE, ASHTABULA, CLEVELAND & MANSFIELD
by David W. Messer



Continuing the rich tradition of his Triumph series books, celebrated author David W. Messer has teamed with the PRRT&HS to offer Conquest 1, documenting the history of the Pennsylvania Railroad’s Lake Division physical plant. This includes the network of PRR lines radiating from Pittsburgh northwest to Erie, Ashtabula, Cleveland and Mansfield from 1848 to the present day.

Conquest 1, a 240-page hardbound book contains 500 illustrations, many in colour, and includes 12 large maps located in a rear pocket. Member price is **\$65.00** each, + shipping and tax (where applicable).

Non-Member price is **\$80.00** each, + shipping and tax (where applicable).

This book can be purchased over the phone by calling Shuman Heritage Printing at 717-751-0100; ask for Connie and please have your credit card ready. It can also be purchased online from the E-Store located on the PRRT&HS website at www.prrths.com

THE WILKINSBURG TRAIN STATION RESTORATION PROJECT



Built in 1915 by Philadelphia architect Walter H. Cookson, the station earned a spot on the National Register of Historic Places in 1985. Vacant for more than 50 years, this Beaux Arts style building will become one of the most historically significant and architecturally unique buildings in the Pittsburgh area.

Its \$6.5 million renovation includes:

- Renovation of existing site amenities and landscape
- Comprehensive restoration of the building's exterior
- Restoration of significant historic spaces on the main floor
- Renovation of the lower level
- New restrooms
- New site utilities, including water, sewer, gas and electrical service
- New mechanical, electrical, plumbing and fire protection services (completed according to historic property standards)

The fully renovated building is expected to be move-in ready by early 2020.

Follow the Wilkesburg Train Station Restoration Project on Face book for project updates.

Submitted by Frank Napoleon

LONG ISLAND RAILROAD G5s RESTORATION COMMEMORATIVE CARS

The Railroad Museum of Long Island is offering O-scale and HO-scale commemorative cars in support of this effort. Visit <http://www.rmlt.us> to learn more, order your car, or make a tax-deductible donation.

**JOIN THE SOCIETY, MAKE DONATIONS, BUY BOOKS
AND PAST ISSUES OF *THE KEYSTONE*
AT OUR e-STORE
Visit us and shop at
http://www.prrths.com/estore/index_estore.html**

CHAPTER MEETINGS

**Support your local chapter - become a member.
Please contact Editor if any of the following information is incorrect.**

ARIZONA CHAPTER

Contact: Sec/Treas. Phil Anderson 480-756-4359 ma393@aol.com

LINES WEST – BUCKEYE REGION CHAPTER

Contact: Al Doddroe at: adoddroe@earthlink.net

CHICAGO TERMINAL CHAPTER

Contact: President Marv Cadwell at: ld_mlc43@comcast.net

GRAND RAPIDS & INDIANA

Contact Jim Winslow at: G5s472@aol.com 1872 Lakeview Drive, Zeeland, MI 49464

LONG ISLAND

P.O. Box 1620, Ronkonkoma, NY 11766

See <https://www.facebook.com/licprrrths/> for meeting information and other updates.

Contact: PRRTHSLIC@gmail.com

Next meeting: Joint with New England Chapter, October 12-13. Please New England Chapter listing.

NEW ENGLAND

Contact, Tim Garner at: t.a.garner@verizon.net or write to New England Chapter PRRT&HS, c/o Tim Garner, Secretary, PO Box 624, Marlborough, MA 01752-0624.

Website: <http://prrrths-ne.org/>

October 12-13, 2019 – Autumn Joint Chapter Meeting

Silk City Model Railroad Club – Manchester, Conn. – Saturday 10/12

Essex Steam Train and Riverboat – Valley Railroad Company – Essex, Conn. – Sunday 10/13

We are planning a Saturday-Sunday joint meeting with the Long Island Chapter for October 12 and 13. We will start with a lunch and New England Chapter meeting at Rein's Deli in Vernon, CT, hold an HO-scale PRR operating session at the Silk City Model Railroad Club, famous for its large model of Horseshoe Curve, followed by dinner in the area. The next day, we will relocate to Essex for a train ride on the Essex Steam Railroad and a riverboat ride on the lower

Connecticut River. For details and sign-up instructions, download the [event flier](#). Please notify Tim Garner by email (t.a.garner@verizon.net) by October 3, 2019 if you plan to attend.

Saturday, December 7, 2019 – Winter Chapter Meeting
New England Model Train Expo, Marlborough, Mass.

This annual event grows bigger every year. There will be over 220 dealer tables, manufacturer displays, operating layouts, and more. Two-day admission is \$10.00. Save \$2.00 in advance. We will meet at noon Saturday at the Longhorn Steakhouse within walking distance of the Royal Plaza Trade Center. The show runs December 7 from 10 to 5 and Sunday December 8 from 10 to 4. For more information about the show and to purchase advance tickets, visit www.hubdiv.org. Members who attend the chapter meeting will be welcome to visit Tim Garner's home in Marlborough later that day to see progress on his PRR layout.

NORTHERN CENTRAL CHAPTER

President: Joe Ioele

Chapter web site: <https://www.facebook.com/northerncentralchapterprtrhs/>

PACIFIC NORTHWEST

Contact President Jim Trunzo at: jetrunzo@gmail.com

PENN-TEXAS CHAPTER

Contact Brady McGuire at: bradyprmla@cableone.net

PHILADELPHIA CHAPTER

Contact: President Gus Minardi, at augustominardi@cs.com

Philadelphia Chapter website is: <http://www.philaprtrhs.com>

Next meetings: October 12, 2019 December 7, 2019.

PITTSBURGH CHAPTER

Contact: Newsletter Editor Don Coulter 412-372-4221 donald.coulter3@verizon.net

WASHINGTON DC CHAPTER

Contact: Paul Schulz at: paulschulz@verizon.net

[PLEASE CONTACT CHAPTER REPRESENTATIVE FOR MEETING DATES AND TIMES](#)

WEBSITE www.prrths.com



SOCIETY SERVICES

See our website http://www.prrths.com/newpr_files/newPRRSocietyServices.htm

Pauletta Ader Editor *The Keystone-NEWS*
Please respond to pauletta.ader@yahoo.com

