

Number 198

January 2019

A bi-monthly electronic official newsletter of the PRRT&HS published for the purpose of disseminating information on current issues and events pertaining to the Society's and Chapter's operations and administration as well as other information of interest about the PRR.

Editor – Pauletta Ader

Please send comments and corrections to the Editor at: pauletta.ader@yahoo.com

Copyright PRRT&HS – 2016 – All Rights Reserved. May be reproduced for distribution. The email distribution of the E-news is now functional To unsubscribe click on line below and send.

keystone-e-news-request@lists.keystone-pubs.org?Subject=unsubscribe To subscribe click on line below and send.
[keystone-e-news-request@lists.keystone-pubs.org? Subject=subscribe](mailto:keystone-e-news-request@lists.keystone-pubs.org?Subject=subscribe)

Not for sale.

If you have a submission for the March E-news PLEASE forward it to me by February 15th. Thank you. Pauletta Ader Editor of the E-news. pauletta.ader@yahoo.com

HAPPY NEW YEAR TO ALL!

With the starting of the New Year, please update me with your new officers and important information requiring your chapters (ex meeting dates, functions, shows and contacts)

IN THIS ISSUE

- **MEMBERSHIP**
- **STATION AND ARCHIVES**

- **NOTES FROM THE BOARD OF DIRECTORS**
- **MODELING UPDATES**
- **FUTURE ANNUAL MEETING LOCATIONS**
- **FEATURE CHAPTER**
- **NAME THE LOCATION**
- **LETTER TO PRRT&HS**
- **PRRT&HS ADVERTISING AND PUBLIC RELATIONS**

MEMBERSHIP

As of Jan. 14, 2019, the PRRT&HS membership for 2019 is as follows:

Regular	728
Sustaining	126
Contributing	33
International	5
Keystone	53
Total	895

Non-renewals 1843 Renewal Rate $876/2,719=32.2\%$
 Keystone mailings include 10 gratis copies (museums, libraries, etc.)

The number of new members for 2019 is 19.

Submitted by Andy Hart

STATION AND ARCHIVE

Station: The metal roof over the canopy on the south (track) side of the station was replaced and leaks repaired around the tower. Roof coating on north side was delayed due to weather. The parking lot is deteriorating to the point that estimates are being solicited for repaving. Platform is also in need of recoating. Lewistown Mayor Deb Bargo was again instrumental in forming a volunteer group to complete the painting. Hopefully, this spring (weather permitting) the brown trim will be completed.

Archives: 2018 was another profitable year for donations to the archives collection, this year there were 48 donations processed. Most notable donations included 90 boxes of records, duplicate drawings and “many” MP 229s from the Hagley, and 150 books, PTT’s and ETT’s from another donor. We also received an amber globe lantern, that was put on display in the tower.

Work continues on processing mechanical department drawings and entering in database, by size and sequence. Photographs are also being processed, as are ETT’s, PTT’s and miscellaneous publications (eg. Menus, pamphlets, articles and Ads)
 Articles submitted by Rich Ader, Accession Manager and Director

ALL PRRT&HS MEMBERS ARE WELCOME TO COME VOLUNTEER THEIR SERVICES IF PRESENT DURING AN ARCHIVE SESSION. CONTACT CHARLIE HORAN charliehoran@verizon.net

NOTES FROM THE BOARD OF DIRECTORS

Calling all Modelers for the 2019 annual meeting

Do you realize that the 2019 PRRT&HS annual meeting is just four months away? While specific details are still being dealt with by the planners, we want to take this opportunity to get you thinking about the Model Room. Ron Hoess will be heading that part of the effort for the Philadelphia Chapter, which is sponsoring the meeting in Strasburg, PA, May 15-18. It isn't too soon to start thinking about what models you might want to bring. Ron would LOVE to see a model room packed to the rafters with models. How about using this deadline as a motivator to finish an old project that you haven't worked on recently? Or starting a new project that you've been putting off? Got some time off coming up? Tired of dealing with annoying relatives? Put your time to good use building a model or better yet, models!

Remember

- ALL SCALES are welcome!
- Incomplete models are welcome (sometimes, incomplete models tell a better story than a complete one!)
- Problems are welcome (stuck? Can't figure out how to do that next step? Bring your model and ask others for advice)
- PRRPro modelers, feel free to bring current and past projects.
- Innovative ideas and approaches are fantastic!
- This is NOT a contest. You don't have to be a "Master Model Railroader" to bring a model. Yes, there is voting for "people's choice best in show" but that's it! Most models are there just for "show and tell".

We hope to see you at the 2019 Annual meeting with your PRR models!

Submitted by: Bruce Smith, Director

MODELING UPDATES

HEY, you guys, I know many of you train enthusiasts have layouts; so do some bragging and send me some pictures and a brief description.

If you are a modeler and you would like to share your layout etc. with your fellow PRRT&HS members in the E-News please contact Pauletta.ader@yahoo.com.

FUTURE ANNUAL MEETING LOCATIONS:

2019 - May 15-18 -- Strasburg, PA

2020 - May 13-16 -- State College, PA

FEATURE CHAPTER

IF YOU WOULD LIKE TO FEATURE YOUR CHAPTER IN A FUTURE EDITION PLEASE CONTACT pauletta.ader@yahoo.com editor of the E-news

Name the Location:

November 2018



Philadelphia

January- Name the location



Letter to PRRT&HS

Rail Camp West 2018

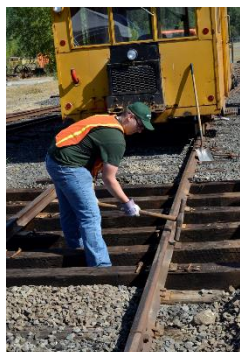
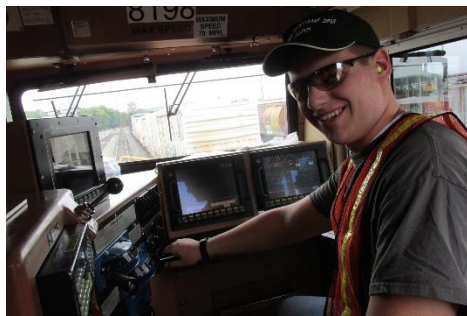
Dear PRRT&HS,

Thank you for helping sponsor me in the National Railway Historical Society's 2018 Rail Camp West. The Rail Camp program is a program for high schoolers ages 14-18 to spend a week in the summer at either an east or west camp and learn about the functions of a railroad. This year Rail Camp west was held in Seattle, WA, and was quite the educational experience for me. There were 15 students total at the camp from as far northeast as Vermont, and as far southwest as Arizona, and all had the same interest I have, railroads! The first day of Rail Camp was with Amtrak in their Seattle shops and yards. We rode Seattle's Sound Transit Commuter service to the shops. At the shops, we were given a tour of their facilities including the railroad yards. In the tour we were shown how Amtrak services their passenger cars and equipment. Due to the Empire Builder being late that day, which we were supposed to ride from the station into the yard, we visited the space needle in Seattle instead. The next day we spent at the Tacoma Railroad which operates the major freight service between the Union Pacific Railroad and the local Tacoma-Seattle businesses and shipping docks. At the Tacoma Rail, we had the opportunity to drive a locomotive up and down a siding track. I drove Union Pacific 8198. Later we were put on yard operations, where we were permitted to sit in the tower and watch the operators run the railroad. After that, we went into the yards and did switching with the crews using radio commands and hand signals. All of the campers, ran the Tacoma Rails training simulator (this is what they trained their engineers on and it was based on the real Tacoma Railroad). We finished this day by visiting the Puget Sound Model Railroad for a running session. Each camper was able to run a train on either the main line or yard work on the large layout based on the Seattle Northern Pacific and Great Northern railways in the early days of

diesel. The third day Rail Camp was held at the Mt. Rainier Scenic Railroad. Here we did trackwork replacing ties and hammering spikes. We were also working in their locomotive shops on machinery and used the lathe to make inspection hammers. Later that day we all had the opportunity to operate steam engine 17, which was built in 1929 by the American Locomotive Company and operated by the Hammond Lumber Company. The fourth day was spent at the Sound Transit shops. Sound Transit is Seattle's commuter rail and we were given a full tour of their shops and dispatch center and shown how the commuter system operates. We were then taken outside and were shown how the cars are powered through the catenary system. The fifth day was spent at the Northwest Railroad Museum, and here we were given a tour of the museum and their railroad equipment from around the mid-west and western parts of the United States. Later we were taken outside where they run passenger trains on their railroad. We all did some switching operations with the engineer and conductor using hand signals. We were then able to run the locomotive ourselves up and down the track. After being outside we were given a shop tour of their restoration projects and were allowed to work on restoring passenger car windows. The last day was spent back at the Mt. Rainier Scenic Railroad with passenger operations. Each camper was helping the public on and off the train for 3 trips, and each camper was given a cab ride back again on the steam engine #17.

Thank you, PRRT&HS, for helping to send me on the educational fun and exciting experience of a lifetime!!!

-John Haubrick, (National and Middle Division Chapter member)



Pictures

1. John Haubrick operating Union Pacific 8198 at the Tacoma Rail.

2. The 2018 Western Rail campers in front of engine # 17 at the Mt. Rainier Scenic Railroad
3. John Hammering Spikes at the Mt. Rainier Scenic Railroad
4. John using hand signals while switching with the Northwestern Railroad Museum
5. John operating the Northwestern Railroad Museums switcher
6. John getting a cab ride in Steam engine # 17

PRRT&HS PUBLIC RELATIONS

THE WILKINSBURG TRAIN STATION RESTORATION PROJECT



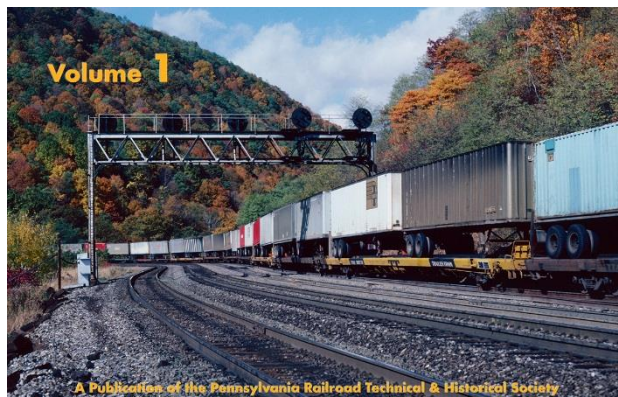
Restoration work continues on the stations' exterior. Renovation of the station's interior began this fall with construction estimated to be complete by the spring or summer of 2019.

Updates and progress photographs can be found on their Facebook page at:

<https://www.facebook.com/WilkesburgTrainStation/>

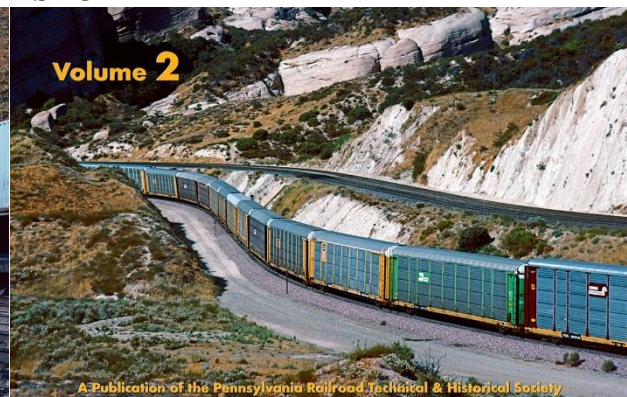
TWO-VOLUME BOOK SET NOW AVAILABLE

THE TTX STORY



The TTX Story

By
James D. Panza
Richard W. Dawson
Ronald P. Sellberg



The TTX Story

By
James D. Panza
Richard W. Dawson
Ronald P. Sellberg

The Pennsylvania Railroad and Rail-Trailer Company formed Trailer Train Company in 1955 to expand piggyback service amongst the nation's railroads. The PRR initially managed TTX, which expanded its ownership to 41 railroads. The 62-year journey started with 500 flatcars in 1956 and grew to over 161,000 cars (TOFC, auto rack, Railbox, Railgon, and specially equipped) today.

The authors, James D. Panza, Richard W. Dawson and Ronald P. Sellberg, combined, have over 90 years of service with Trailer Train/TTX. They present much "insider" information on company decisions, car design, and the shift to container intermodal service. Presented in landscape format the two-volume book set is hardbound, all-color and together total 624 pages.

PRRT&HS Member price is **\$79.95** each, plus shipping and tax (where applicable).

Non-Member price is **\$99.95** each, plus shipping and tax (where applicable).

These books can be purchased over the phone by calling Kutztown Publishing at 610-683-7341; ask for Connie and please have your credit card ready. They can also be purchased online from the e-Store located on the PRRT&HS website at www.prrths.com

LONG ISLAND RAILROAD G5s RESTORATION COMMEMORATIVE CARS

The Railroad Museum of Long Island is offering commemorative O-scale and HO-scale commemorative cars in support of this effort. Visit <http://www.rmli.us> to learn more, order your car, or make a tax-deductible donation.

JOIN THE SOCIETY, MAKE DONATIONS, BUY BOOKS AND PAST ISSUES OF *THE KEYSTONE*

AT OUR e-STORE

Visit us and shop at

http://www.prrths.com/estore/index_estore.html

CHAPTER MEETINGS

Support your local chapter - become a member.

ARIZONA CHAPTER

Contact: Sec/Treas. Phil Anderson 480-756-4359 ma393@aol.com

LINES WEST – BUCKEYE REGION CHAPTER

Contact: Al Doddroe at: adoddroe@earthlink.net

CHICAGO TERMINAL CHAPTER

Contact: President Marv Cadwell at: ld_mlc43@comcast.net

GRAND RAPIDS & INDIANA

Contact Jim Winslow at: G5s472@aol.com 1872 Lakeview Drive, Zeeland, MI 49464

LONG ISLAND

P.O. Box 1620, Ronkonkoma, NY 11766

See <https://www.facebook.com/licprrrths/> for meeting information and other updates.

Contact: PRRTHSLIC@gmail.com

On February 3rd, 2019 at RMLI in Riverhead, we will be hosting our first membership meeting of the year. Presentation by Gerard Jewels.

MIDDLE DIVISION

Contact Jacqueline McConahy at railroadgirl29@comcast.net

NEW ENGLAND

Contact, Tim Garner at: t.a.garner@verizon.net or write to New England Chapter PRRT&HS, c/o Tim Garner, Secretary, PO Box 624, Marlborough, MA 01752-0624.

Website: <http://prrrths-ne.org/>

Saturday, January 26, 2019 – Informal Chapter Meeting

Amherst Railway Society Railroad Hobby Show – West Springfield, Mass.

The annual two-day event at the Eastern States Exposition (The Big E) is the biggest train show in the northeastern US. It has become a tradition for Chapter members to meet briefly at noon on day one by one of the roll-up doors in the Stroh Building to say hello, swap stories, and compare purchases so far. Visit www.railroadhobbyshow.com for details on the show.

March 23, 2019 – Spring Chapter Meeting

North Shore Model Railroad Club – Wakefield, Mass.

Organized by our Vice President Andy Miller, this operating session will give us a chance to run a variety of PRR equipment on the club's sizeable HO layout. We'll arrive between 11:00 and noon at the club to drop off equipment, move upstairs to Brothers Restaurant for lunch and our business meeting at noon, then return to the layout for the operating session for the rest of the afternoon. Layout can run DCC and DC. Members running DCC equipment should de-consist their locomotives before running them on the layout. For directions to the club, visit www.nsmrc.org.

NORTHERN CENTRAL CHAPTER

President: Joe Ioele

Chapter web site: <https://www.facebook.com/northerncentralchapterprrrths/>

PACIFIC NORTHWEST

Contact President Jim Trunzo at: jetrunzo@gmail.com

PENN-TEXAS CHAPTER

Contact Brady McGuire at: bradyprrm1a@cableone.net

PHILADELPHIA CHAPTER

Contact: President Gus Minardi, at augustominardi@cs.com

Philadelphia Chapter website is: <http://www.philaprrths.com>

The Philadelphia Chapter meets again on February 9, 2019. Another day of modeling, dining, camaraderie and a presentation by Frank Tatnall, "The Main Line to Paoli: A Railroad or a Place?" All details on the website.

PITTSBURGH CHAPTER

Contact: Newsletter Editor Don Coulter 412-372-4221 donald.coulter3@verizon.net

WASHINGTON DC CHAPTER

Contact: Paul Schulz at: paulschulz@verizon.net

PLEASE CONTACT CHAPTER REPRESENTATIVE FOR MEETING DATES AND TIMES

WEBSITE www.prrths.com



SOCIETY SERVICES

See our website http://www.prrths.com/newpr_files/newPRRSocietyServices.htm

Pauletta Ader Editor *The Keystone-NEWS*
Please respond to pauletta.ader@yahoo.com

