

Number 186

March 2017

A bi-monthly electronic official newsletter of the PRRT&HS published for the purpose of disseminating information on current issues and events pertaining to the Society's and Chapter's operations and administration as well as other information of interest about the PRR.

Editor – Pauletta Ader

Please send comments and corrections to the Editor at: pauletta.ader@yahoo.com

Copyright PRRT&HS – 2016 – All Rights Reserved. May be reproduced for distribution. The email distribution of the E-news is now functional To unsubscribe click on line below and send.

[<mailto:keystone-e-news-request@lists.keystone-pubs.org?Subject=unsubscribe>](mailto:keystone-e-news-request@lists.keystone-pubs.org?Subject=unsubscribe) To subscribe click on line below and send.

[<mailto:keystone-e-news-request@lists.keystone-pubs.org?Subject=subscribe>](mailto:keystone-e-news-request@lists.keystone-pubs.org?Subject=subscribe)

Not for sale.

If you have a submission for the May E-news PLEASE forward it to me by April 15th. Thank you. Pauletta Ader Editor of the E-news. pauletta.ader@yahoo.com

IN THIS ISSUE

- **MEMBERSHIP**
- **ARCHIVES**
- **STATION**
- **MODELLING UPDATES**

- **RAILROAD HERITAGE DAYS**
- **FEATURE CHAPTER OR GROUP**
- **MATCHING CHAMPAIGN CHALLENGE**
- **NOTES FROM THE PACIFIC NORTHWEST**
- **NEW GAME (NAME THE LOCATION)**
- **THE TCA NATIONAL CONVENTION**
- **THE BOYS AT TIMONIUM**
- **PRRT&HS ADVERTISING**

MEMBERSHIP

As of February 11, 2017, the PRRT&HS membership for 2017 is as follows:

Regular	1,605
Sustaining	279
Contributing	66
International	20
Keystone	121
 Total	 2,091

Non-renewals 745 Renewal Rate $2,043/2,788=73.3\%$

Keystone mailings include 12 gratis copies (museums, libraries, etc.)

The number of new members for 2017 is 48.

Submitted by Andy Hart

ARCHIVES

PRR Valuation Maps Coming on DVD

A number of PRRT&HS archive volunteers, spear-headed by Stephen Titchenal, have been working to scan the society's extensive collection of PRR "Valuation" Maps.

Valuation maps were required by the Interstate Commerce Commission in the 1916 time-frame to accurately record all of each railroad's "infrastructure." The ICC would then estimate the value of that infrastructure, and use it as part of the basis for setting freight rates. The society has an incomplete set of original "linens" from around 1919, a nearly (over 95%) complete set of 1949 Blueline prints, and the board of directors recently agreed to contribute to the scanning of what may be a complete set of late 1960's Val maps obtained from Conrail on aperture cards. Each Val map covers one mile of Right-of-Way – for the PRR, that results in nearly 15,000 Val maps for the entire RR. For each year, PRR Val maps show the current RoW – they do not track revision history, so the 1960's set does not document the track and structures previously

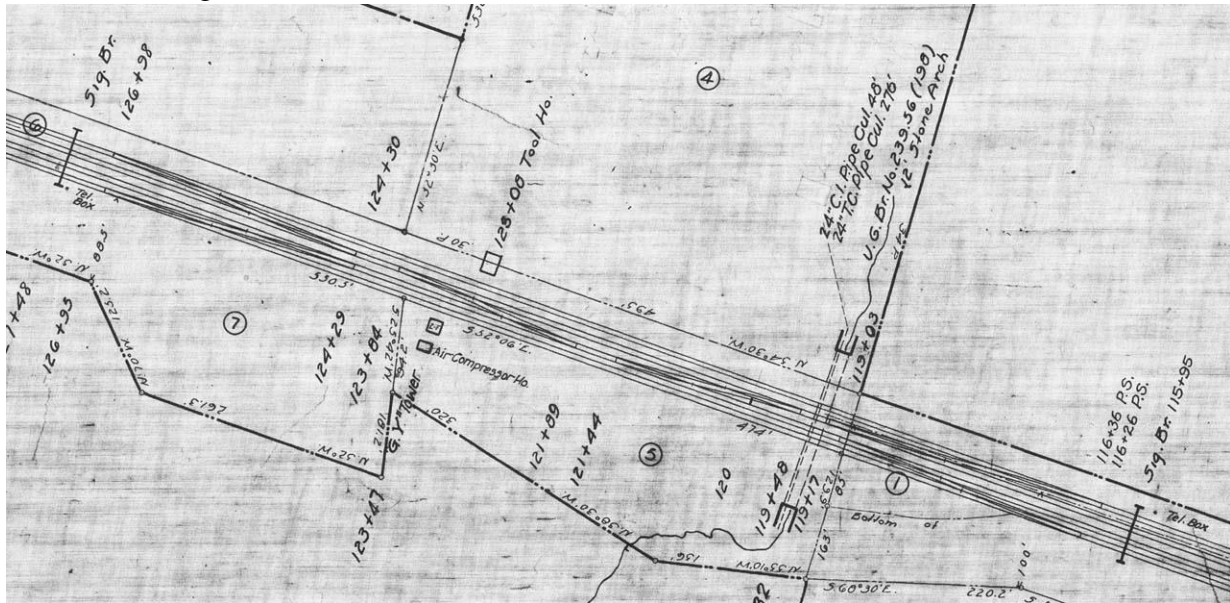
removed, and the 1960's set is not of the same quality as the prints and linens in the society's archives. So different members will need to use different maps, depending on their era of interest.

One challenge of viewing Valuation maps is the very large computer file sizes. Over one “Giga-byte” of files for one division’s main line, and that is just for one format of the data. In the near-term the most labor effective method to distribute the maps is to publish them on DVD’s – with both PDF and jpeg file formats. In addition, the Val maps are indexed as civil engineering documents, and will benefit from other documents to help understand each maps location and context, and we plan to include such documents on the DVDs. Given that we are relying on volunteer effort to distribute the maps, we believe that selling DVDs requires the fewest volunteer hours to get the maps out to the members.

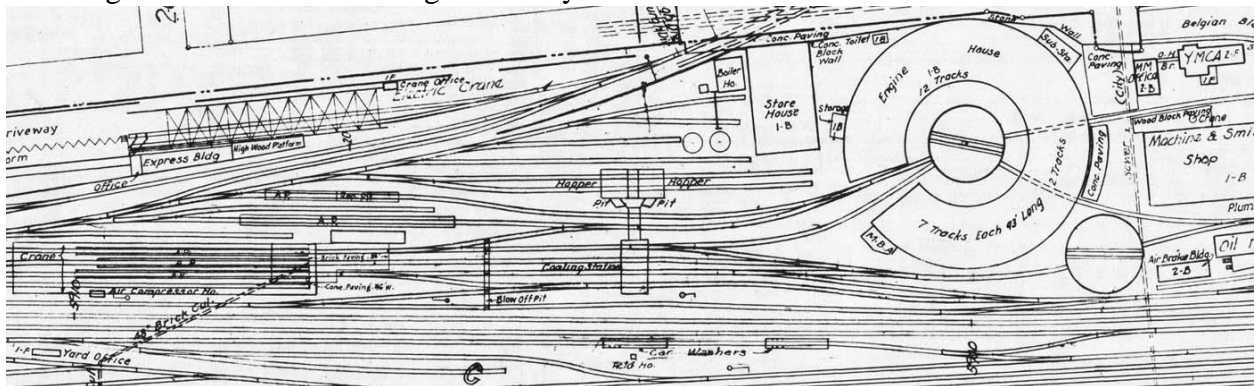
During the February Board of Directors meeting, the directors agreed to start the process of making these digital Val map scans widely available. As a trial, the board agreed to sell DVD's, each containing the Val maps for one of the PRR's division's based on the late 40's system organization. The first Val map DVD is to be of the Pittsburgh division using the 1949 set of maps. Hopefully the team can include the Pittsburgh division branches, although that will require a second DVD. The board agreed to sell the DVD's priced so that as many members as possible can afford them, within the constraint of not losing money, but also not priced to make money either. Initial pricing will be \$15 for a single DVD, and \$25 for a double DVD set that includes the mainline and branches for the larger divisions (like Pittsburgh.) The first DVD should be available for purchase at the annual meeting (hopefully a 2 DVD set with both the mainline and branches.) More divisions will follow - how often will depend on the number of volunteers who help with Val map project.

Below are two examples of small portions of the Pittsburgh Division Val maps. The first is GY interlocking, between Altoona and Horse Shoe Curve. The second is the 28th street engine terminal in Pittsburgh, just railroad east of the Pittsburgh passenger station.

GY interlocking - 1949



Pittsburgh terminal 28th street engine facility:



Both images displayed here are at one half of the resolution of the maps to be included on the DVD's.

Additional information on the Val map project, and a call for volunteers will be provided in the April e-news.

Submitted and written by Dave Evans



Stephen Titshenal and Ed Klein scanning Valuation maps.
Photo submitted by Pauletta Ader

ALL PRRT&HS MEMBERS ARE WELCOME TO COME VOLUNTEER THEIR SERVICES IF PRESENT DURING AN ARCHIVE SESSION. CONTACT CHARLIE HORAN
charliehoran@verizon.net.

STATION

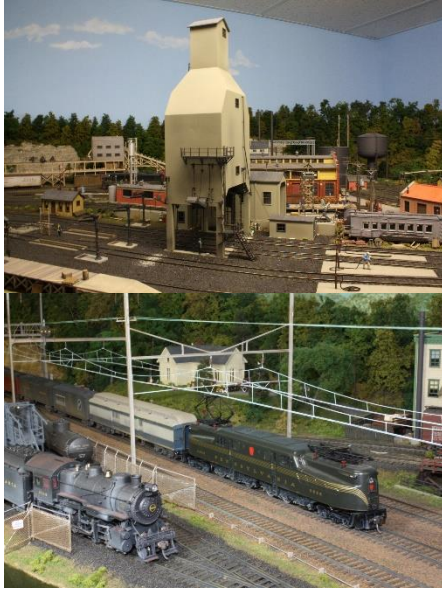
Nothing new to report now.

MODELLING UPDATES

Ed Swain's Freelance PRR Middle Division

Ed Swain's 36 x 36-foot HO layout is set in the late 1940's in the Harrisburg Pennsylvania area. A photo essay on the layout was in the Keystone Modeler, Issue No. 89, summer 2014. It was also covered in the April 2015 issue of Model Railroader. Since those articles were prepared, Ed has completed the Enola Engine Servicing Facility and has started installing catenary along a 30 foot stretch of mainline. These pictures show his recent progress.





Photos and article submitted by Ed Swain

Any modelers out there who would like to share modelling updates and ideas or would like their layout to be featured in the E-news please contact me at pauletta.ader@yahoo.com.

FUTURE MEETING LOCATIONS:

2017- Camp Hill Washington Chapter-Host Chapter Invitation

Pennsylvania Railroad Technical and Historical Society
An Invitation to the 49th Annual Meeting
May 18-21, 2017

The Washington DC Chapter of PRRT&HS is proud to host the 2017 PRRT&HS Annual Meeting at the Radisson in Camp Hill, PA

Highlights:

- **The PRRT&HS has arranged for a rail-fan excursion Thursday from Sunbury to Shamokin and Locust Summit**, and return, with bus service between Camp Hill and Sunbury. Details and a registration form are included in this packet. PRRT&HS members get first preference if they submit payment by April 10th. Space is limited – so *Reserve early!* Note that you do not have to attend the annual meeting to take the ride, but we hope you will join us for the full meeting at Camp Hill.
- **Tours are being arranged for Harris Tower, the Pennsylvania State Archive research area, and Safe Harbor Dam on the Susquehanna** – which powered the PRR's overhead catenary for decades. (Final details are being confirmed – visit the PRRT&HS 2017 annual meeting web site at <http://2017.pennsyrr.com>, and click on the tours tab)
- **This year we have re-tasked the rooms at the Radisson convention center**, recovering some unused space. We will have 3 rooms for presentations on Friday and Saturday, supporting 23 different presentations from 20 presenters, with 42 opportunities to catch what

you are interested in! Modeling, the prototype, and some guests from our back yard – Washington DC, who will highlight the history of the PRR in DC and Northern Virginia. All of this within the Radisson convention space! (Visit the PRRT&HS 2017 annual meeting web site at <http://2017.pennsyrr.com>, and click on the schedule and presentation tabs for the latest program)

- **We have increased the vendor space by 50%** - so your opportunities to fulfill your quest just went up!
- While the banquet will be in the Ballroom as usual (although on the south side this year), after dessert we will be presenting **Rick Musser, our banquet speaker**, in the combined Keystone rooms. Rick is the **Vice President and Assistant Chief Mechanical Officer (CMO) at the Strasburg RR and shops**. And his steam locomotive experience goes back 30 years, to include firing PRR 1223 and 7002! The ceiling may be lower in the Keystones, but we are confident the acoustics will be MUCH better, so you will be able to follow Rick's presentation on the challenges of long-term steam operations in revenue service, and the challenges of restoring steam locomotives. A brief panel discussion after Rick's presentation will also include Don Fisher, of the Long Island RR #39 G5s restoration effort. Should be an interesting discussion!
- We think the new room configuration will provide for a much more interesting and rewarding meeting, and hope you can join us to check it out.
- If you haven't attended an Annual meeting before, Camp Hill is just 8 minutes from Harrisburg, PA, on the west side of the Susquehanna River.

We would like to thank the members of the Harrisburg Chapter of NRHS, the DC Chapter of NRHS, and the Richmond, Fredericksburg and Potomac Railroad Historical Society for supporting this me

2018- 50th Anniversary Altoona

2019- Strasburg

RAILROAD HERITAGE DAYS:

PRRT&HS will be an active participant at the Railroad Museum of Pa.

Railroad Heritage Days, September 9th and 10th. Once all the activities have

been finalized, updated information for this event will be placed on the Society

web site.

Submitted by Joe Acri

FEATURE CHAPTER:

WASHINGTON DC CHAPTER

Number of members – 33 as of 12/1/2016

History – The DC chapter of the PRRT&HS is relatively new – the chapter was first proposed in 2009 by a small group of PRRT&HS members during the trip back from the Merrillville annual meeting, and formally recognized in 2010.

The core group formed up in the mid-2000s during the construction and operation of two home based PRR layouts by Paul Schulz, chapter President, and Bill Pauling (who started his civil engineering career working for the PRR.) Once the chapter formed, others with either a PRR themed layout or just general interest in the PRR have joined the chapter. Growth has been slow but steady, and at the 2016 PRRT&HS annual meeting, the chapter was recruited to be the host for the 2017 annual meeting.

Officers

President – Paul Schulz

Vice president – Dave Evans

Secretary – John Swanson

Treasurer – Tom Kane

2017 Annual meeting committee:

Chairman – Paul Schulz

Registration – John Swanson

Financial – Tom Kane

Tours – Greg Petrick

Model Room – Martin Harding

Banquet – Diego Procacci

Vendor Room – John Sethian

Program – Dave Evans

Primary chapter activity since the fall of 2016 has been planning and preparing for the 2017 Annual meeting, since DC chapter is the host. A registration package was mailed to all PRRT&HS members on February 27th.

Meeting dates and location – ad hoc, either at the Chapter President’s home (with layout), or at the Northern Virginia Model Railroaders facility in Vienna, VA

The chapter schedules events as opportunities occur, which has included tours of various layouts, deployment of the PRRT&HS booth at the Greenberg train shows in Chantilly, VA, a tour of the B&O Railroad museum in Baltimore, and a lunchtime gathering during the Timonium train show.

Pictures:



Herb Biegel, Gerry Wolfson, John Swanson, Martin Harding, and Paul Schulz stuffing envelopes with the 2017 annual meeting registration packet.

**IF YOU WOULD LIKE TO FEATURE YOUR CHAPTER IN A FUTURE EDITION
PLEASE CONTACT pauletta.ader@yahoo.com editor of the E-news**

MATCHING CAMPAIGN CHALLENGE

The Matching Campaign Challenge has been meet. **THANKS TO OUR PRRT&HS
MEMBERSHIP DONORS!**



Steve Staffieri's presentation of the matching donation check to the Friends of the RR Museum.

It is not too late to donate:

Please send your contributions to:

Friends of the Railroad Museum of Pennsylvania

PO Box 125

Strasburg, PA 17579

Or Contributions may also be accepted conveniently and securely

Online at www.rrmuseumpa.org

NOTE: Donations are tax deductible

NOTES FROM THE PACIFIC NORTHWEST:



Coast to Coast Service in 2016; The Pennsylvania Railroad celebrates 170 years of operation. Photo taken at Rock Island, WA by Jim Trunzo

NEW GAME:

This is a new game for the E-News with the locations all being PRR. Rules of the game, there will be a picture posted in each issue of “somewhere on the PRR system”. Please email me with your answer/guess. (pauletta.ader@yahoo.com)

Name the Location Game:

Where is this located?



January results



York, Pennsylvania

Submitted by: Tom Werner from Sodertalje, Sweden

If you would like to submit a picture for this game, email me with the picture and location. Individuals submitting photos cannot participate in that issue. *Please send digital pictures or photos of pictures.*

TCA NATIONAL CONVENTION INFORMATION

Christopher DiCianna and George Starz, Co-Chairmen of the TCA National Convention which will be held in Pittsburgh in June. The TCA has had many great and successful conventions in Pittsburgh in the past and this year's will be no exception. Typically the Convention is open only to TCA members and their guests but this year we have one major exception to that rule and one significant announcement.

On Sunday, June 25, 2017, the TCA is organizing a **WONDERFUL** train excursion experience! Tour participants will begin their journey on-board a privately chartered, TCA SPECIAL AMTRAK train from Pittsburgh to Altoona and have a first-hand experience riding the rails through the World-Famous Horseshoe Curve. After arrival in Altoona, buses will shuttle visitors to the Horseshoe Curve visitor center and funicular and the Altoona Railroaders Memorial Museum. Lunch will be provided during the trip while in Altoona and the train will have a Café Car for Pay-as-you go snacks and beverages. We will have special events on the train as well. More information can be found on www.tcaconvention.org

The second big announcement (and this will be of special interest to anyone considering the Amtrak trip) is that the TCA is, for the first time, offering Trial Memberships where an individual can pay \$25 and receive full membership benefits for 6 months. This would include the ability to attend the TCA Convention AND the Eastern Division Train Meet in York, PA in April. Most importantly if you become a TCA member you can ride the TCA SPECIAL at the TCA member rate. The member's guests and family will be eligible for the TCA rates for the trip. If you look at the schedule of Rates for our Amtrak tour there is a real advantage to become a Trial Member and attend the convention and take the trip with us and be able to take the trip to the **Age Of Steam Roundhouse in Sugarcreek Ohio** which is not normally open to the public for tours.

The Boys at Timonium



PRRT&HS ADVERTISING / PUBLIC RELATIONS

To increase the Society's visibility and promote membership in the PRRT&HS the Board of Directors initiated an advertising campaign in 2015. Since then ads have appeared at various times in *Passenger Train Journal*, *Railroad Model Craftsman* and *Classic Trains Magazine*.

Another phase of the campaign is to promote increased use of the Society's portable display which is available to any member willing to host it. For those unfamiliar with the portable display it contains sample issues of *The Keystone*, *The Keystone Modeler* and *The Keystone e-NEWS*, as well as membership brochures, membership applications, information on the Lewistown Archives and a list of PRRT&HS publications available for purchase on our website. Book samples are available to those hosts willing to display them. While train shows are an obvious venue consideration should be given to events sponsored by local historical societies and railroad museums; especially those in areas that had a strong PRR presence. The following are the current committed dates for the display:

March 24 & 25, 2017; RPM-EAST, Greensburg, PA (Pittsburgh Chapter)

April 8, 2017; Great Scale Model Train Show, Timonium, MD (Jerry Britton)

May 17 - 20, 2017; PRRT&HS 49TH Annual Meeting, Camp Hill, PA

June 23 & 24, 2017; The 2017 St. Louis RPM Meet, Collinsville, IL (Bob Flores)

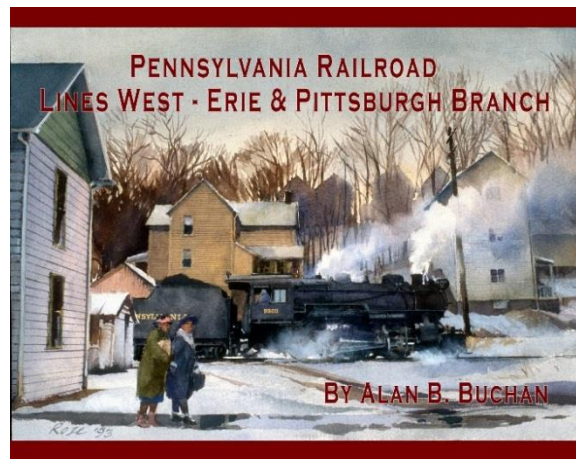
The portable display gives the PRRT&HS exposure to those unaware of our existence and the potential to attract new members; please consider hosting it. Table cost and shipping charges are covered by the PRRT&HS.

Another way for members to help promote the Society is to ask permission and place copies of the PRRT&HS Membership Brochure in hobby shops, museums, local historical society's, etc.

The portable display gives the PRRT&HS exposure to those unaware of our existence

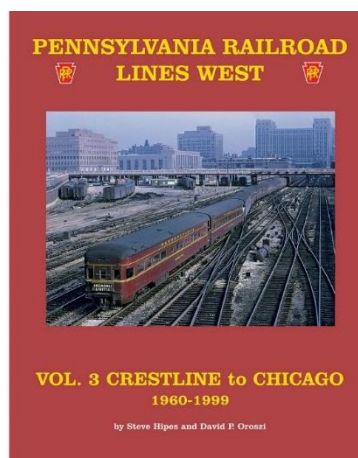
To arrange for use of the portable display or to request copies of the Membership Brochure contact Frank Napoleon at frank.napoleon@verizon.net.

ERIE & PITTSBURGH BRANCH - **SOLD OUT**



The *Erie & Pittsburgh Branch* book is **SOLD OUT**. If you missed the boat and still want a copy, please call 610-683-7341, extension 1005 to be placed on a list of those interested in a (possible *Second Edition* reprint). Also, check the E-store located on the PRRT&HS website for other available Society publications.

NEW PRR LINES WEST BOOK BY WRP



The *Pennsylvania Railroad Lines West* series continues with Volume 3: Crestline to Chicago 1960-1999. Featuring the stunning color photography of Steve Hipes and David Oroszi, this hardcover book covers the eras spanning from the Pennsylvania Railroad through Penn Central to Conrail. Explore the mainline from Chicago via Fort Wayne, the Grand Rapids & Indiana to Conrail. Explore the mainline from Chicago via Fort Wayne, the Grand Rapids & Indiana to Mackinaw City, the Toledo and Sandusky branches, and much more.

White River Productions, <https://shop.whiteriverproductions.com/>

THE WILKINSBURG TRAIN STATION RESTORATION PROJECT



Marlee Gallagher, Communication & Outreach Coordinator of the Wilkinsburg Community Development Corporation has informed the PRRT&HS that they are leading the effort to restore the former Pennsylvania Railroad station in Wilkinsburg, PA. An iconic landmark, the Beaux-Arts style station was built in 1916 and is listed on the National Register of Historic Places. Despite its pedigree, the building has been vacant since 1976 and has fallen into disrepair.

To date, \$2.7 million has been committed/raised towards the campaign goal of \$3 million to restore the station and bring it back to productive reuse as a transit-focused civic space. Together with their partners which include Allegheny County and the Borough of Wilkinsburg they have established the WCDC Holding Company to manage the restoration project. The Pittsburgh architectural firm of MacLachlan, Cornelius & Filoni (MCF) has been selected to complete the station restoration and stabilization of the building is currently underway. For additional

information on the project check out the campaign website and video at <http://www.wilkstation.org>. They also have a Facebook page at <https://www.facebook.com/WilkinsburgTrainStation>.

The Wilkinsburg Community Development Corporation is looking for people to promote the project, donate, volunteer on a committee, and/or provide other resources - including photographs and stories as the Wilkinsburg Historical Society plans to publish a commemorative book about the station and restoration project. Although the 1916 station will be the primary focus of the publication they are interested in any pertinent information such as documents, plans, timetables, photographs and personnel remanences related to the Pennsylvania Railroad's presence in Wilkinsburg over the years.

If you have relevant materials to share or have an interest in assisting with this project, contact Marlee Gallagher at 412-727-7855 or marlee@wilkinburgcdc.org.

Submitted by Frank Napoleon

SOCIETY MEMBERSHIP

The purpose of the Pennsylvania Railroad Technical & Historical Society is to bring together persons interested in the history and modeling of the Pennsylvania Railroad, its subsidiaries and its predecessor companies. Our goals are to promote the preservation and recording of all information regarding the organization, operation, facilities and equipment of the PRR.

The Society's quarterly illustrated journal, *The Keystone*, has been published continuously since 1968. Each issue of 84 or more pages contains illustrated original authoritative articles, about locomotives, cars, other equipment, facilities and operating practices of the PRR. The Society also publishes its own thoroughly researched books and other materials concerning Pennsy history. *The Keystone Modeler* is also a quarterly special 30-plus page online publication of the Society. These publications are for sale on our website.

The Society meets annually, usually during the first weekend in May, providing an opportunity for its members to get together and learn more about the PRR. Local chapters around the country also provide members and guests with regular meetings that feature PRR related programs, see listing below for chapter events.

Information about our Society may be found on our website <http://www.prrths.com>. To join the Society you may use the e-Store http://www.prrths.com/estore/index_estore.html#membership or send \$40.00 to: PRRT&HS, PO Box 54, Bryn Mawr, PA 19010-0054. All memberships are for a calendar year, renewals after February 15th are \$45.00. The additional late dues fee pays to ship any Keystones that missed the normal mailing.

Drawings from Microfilm

Copies of PRR equipment drawings are available from the Society's microfilm collection. To order drawings, you must know the drawing number and title. Ordering information and lists of arrangement drawings are available on the Society's website, www.prrths.com, under National Society, The

Interchange. If you require a printed copy of this information, please send your address and a check for \$2.00 made out to PRRT&HS to: Richard C. Price, 779 Irvin Hill Road, McVeytown, PA 17051.

JOIN THE SOCIETY, MAKE DONATIONS, BUY BOOKS

AND PAST ISSUES OF *THE KEYSTONE*

AT OUR e-STORE

Visit us and shop at

http://www.prrths.com/estore/index_estore.html

CHAPTER MEETINGS

Support your local chapter - become a member.

ARIZONA CHAPTER

Contact: Sec/Treas. Phil Anderson 480-756-4359 ma393@aol.com

LINES WEST – BUCKEYE REGION CHAPTER

Contact: Al Doddroe at: adoddroe@earthlink.net

CHICAGO TERMINAL CHAPTER

Contact: President Marv Caldwell at: ld_mlc43@comcast.net

GRAND RAPIDS & INDIANA

Contact Jim Winslow at: G5s472@aol.com 1872 Lakeview Drive, Zeeland, MI 49464

LONG ISLAND

P.O. Box 1620, Ronkonkoma, NY 11766

MIDDLE DIVISION

Contact Rich Ader at: richie0745@yahoo.com

NEW ENGLAND

Contact, Tim Garner at: t.a.garner@verizon.net or write to New England Chapter PRRT&HS, c/o Tim Garner, Secretary, PO Box 624, Marlborough, MA 01752-0624.

NORTHERN CENTRAL CHAPTER

Contact President Jerry Britton at: jerry@pennsyrr.com

Chapter web site: <http://ncchapter.pennsyrr.com>

PACIFIC NORTHWEST

Contact President Jim Trunzo at: jetrunzo@gmail.com

The Pennsylvania Railroad Technical and Historical Society Has Formed a Pacific Northwest Chapter Next Meeting is **April 2, 2016**

PENN-TEXAS CHAPTER

Contact Secretary Walt Van Arsdale at: varsdale@verizon.net

PHILADELPHIA CHAPTER

Contact: President Steve Staffieri at: interceptor92@verizon.net

Philadelphia Chapter website is: <http://www.philaprrths.com>

PITTSBURGH CHAPTER

Contact: Newsletter Editor Don Coulter 412-372-4221 donald.coulter3@verizon.net

WASHINGTON DC CHAPTER

Contact: Paul Schulz at: paulschulz@verizon.net

[PLEASE CONTACT CHAPTER REPRESENTATIVE FOR MEETING DATES AND TIMES](#)

WEBSITE www.prrths.com



SOCIETY SERVICES

See our website http://www.prrths.com/newprrr_files/newPRRSocietyServices.htm

Pauletta Ader Editor *The Keystone-NEWS*
Please respond to pauletta.ader@yahoo.com

